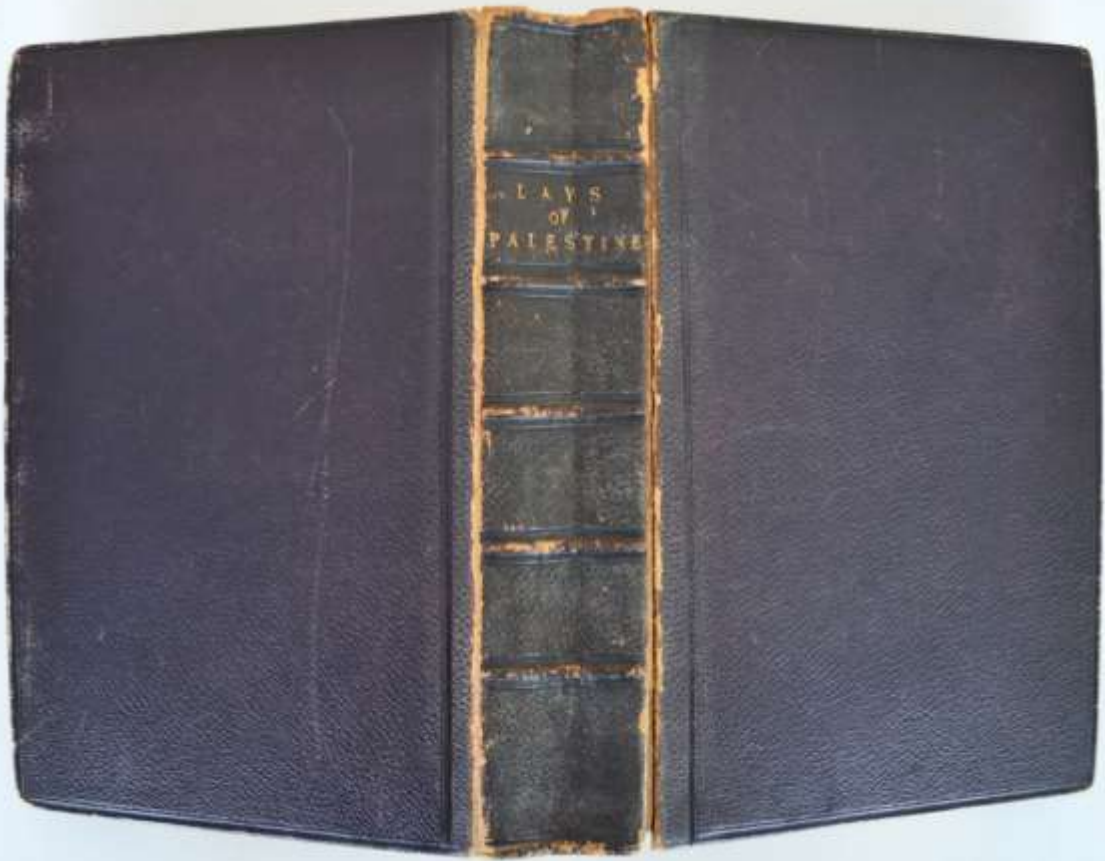
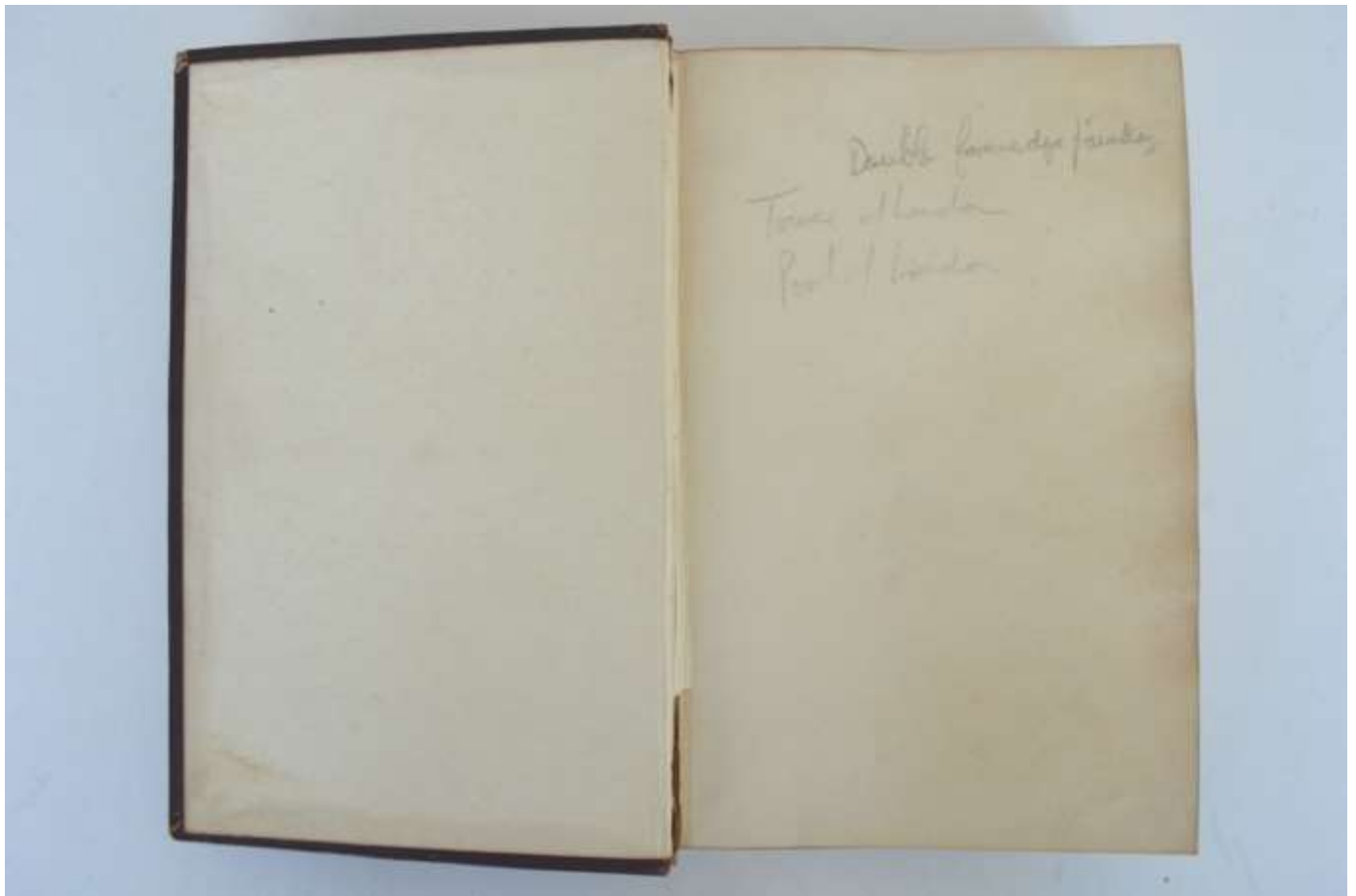


Lays of Palistine

DOUBLE FORE-EDGE BOOK





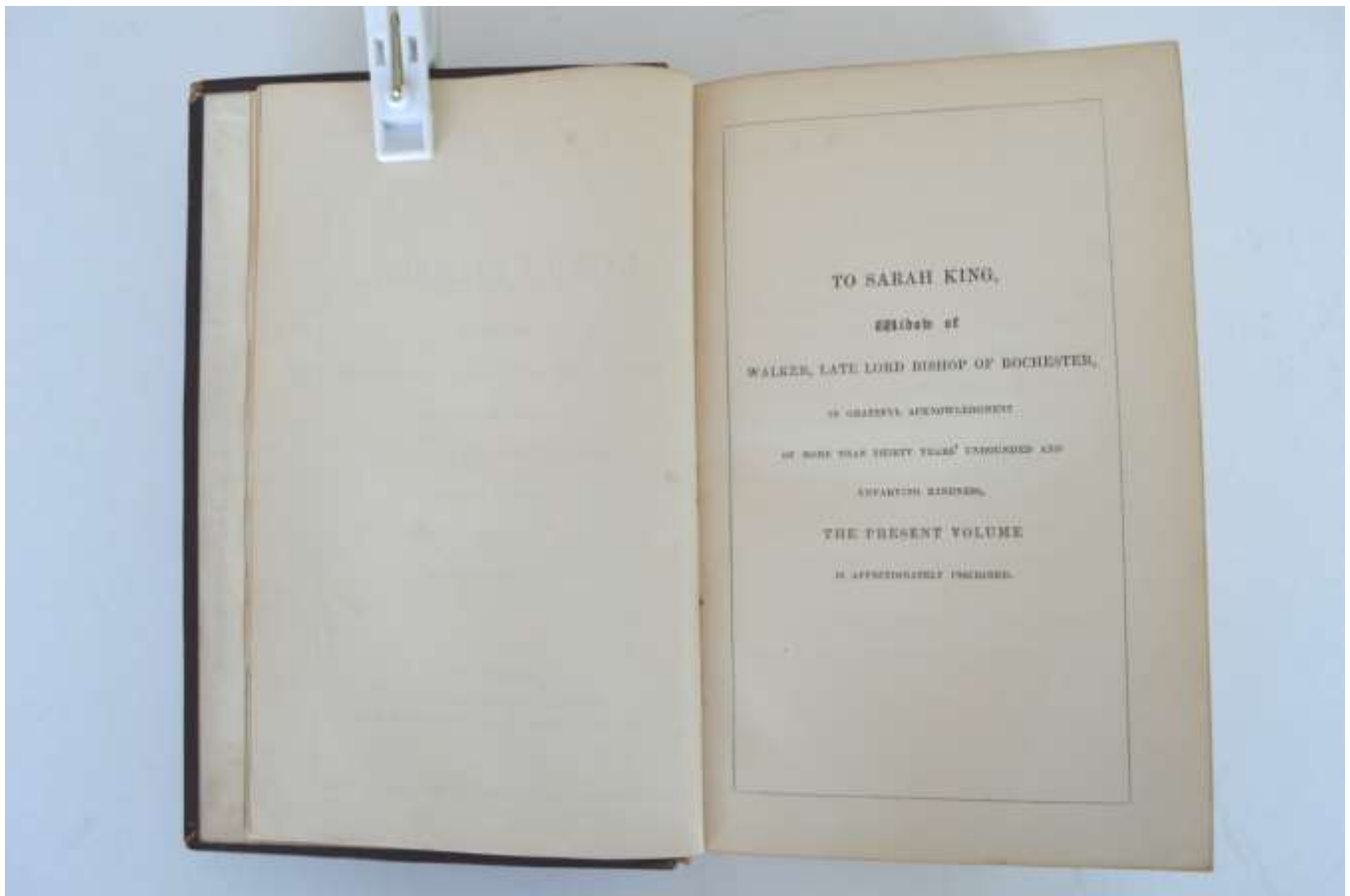


Double forwarder  
Tone of hand  
Post of hand

To  
Mary Ann Ogilvie,  
from the Author,  
an old Pupil of her Father,  
MDCCCLI.

LAYS OF PALESTINE.

LONDON:  
FRANCIS & JOHN RIVINGTON,  
ST. PAUL'S CHURCH-YARD, AND WATERBURY PLACE.  
1851.



**Title of Book:** Lays of Palestine

**Publisher:** London: Francis & John Rivington, St. Paul's Church Yard, and Waterloo Place.

**Publication Date:** 1851

**Condition:** Book: Some clipping to the crown. Paintings: Both paintings clean and without major flaws.

**Provenance:**

- a) Mary Ann Ogilvie
- b) Poulin Antiques & Auctions

**Description:** Painting is found on a 12mo copy of LAYS OF PALESTINE published London: 1851. Of additional interest is an inscription "From the Author an old Pupil of her Father MDCCLI". It is bound in full fine grain morocco with the block sound but the front cover started and some clipping to the crown. Est. \$375-425.

***Fore-edge Painting: DOUBLE FORE-EDGE PAINTING.*** Attributed to Samuel E. Stevens (ca 1947-1967). The initial fore edge painting displays the Tower of London and the Port of London. Both are from the perspective of the other side of the Thames. Within the first instance a sailing ship in the fore ground and in the second a man rowing a boat.