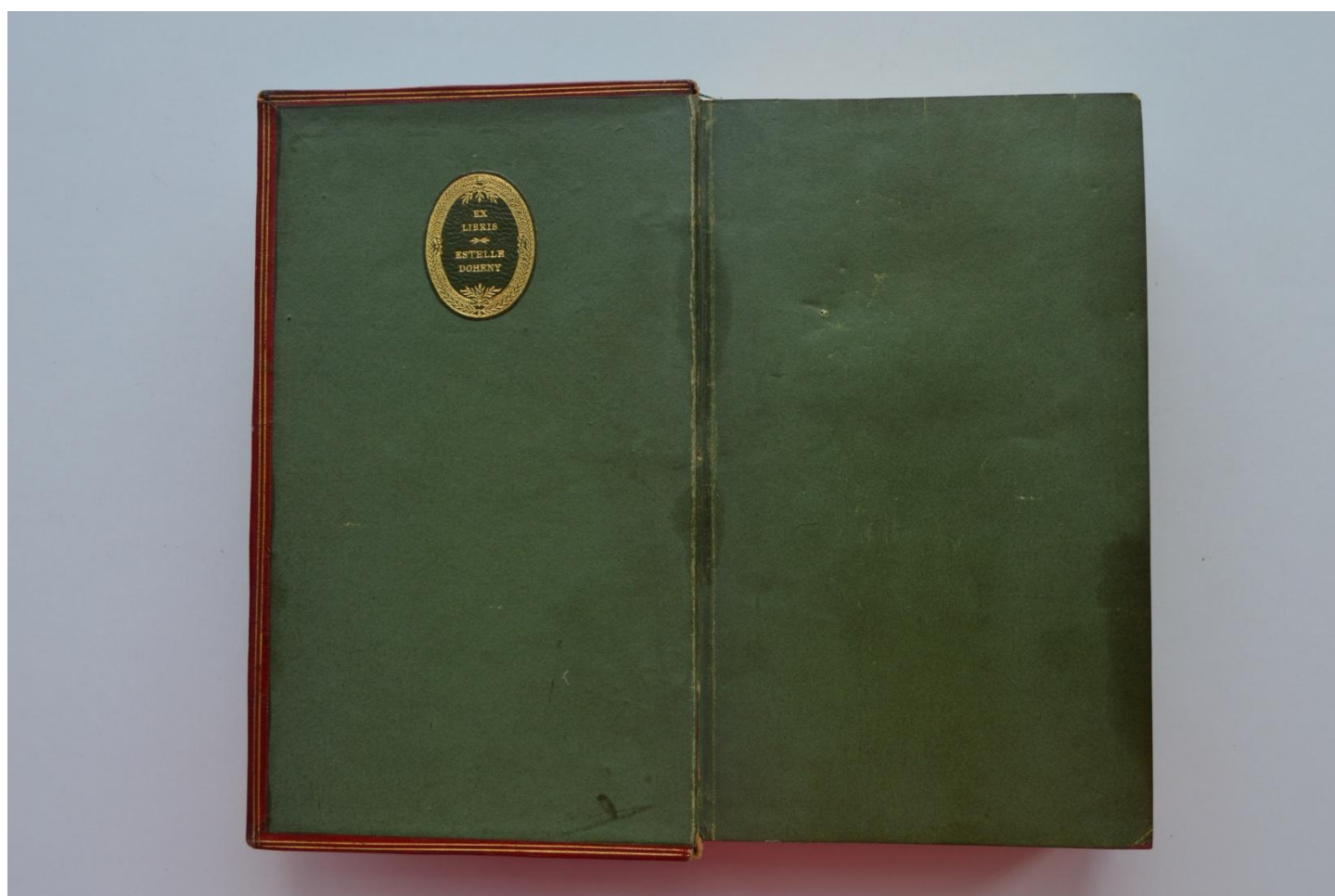
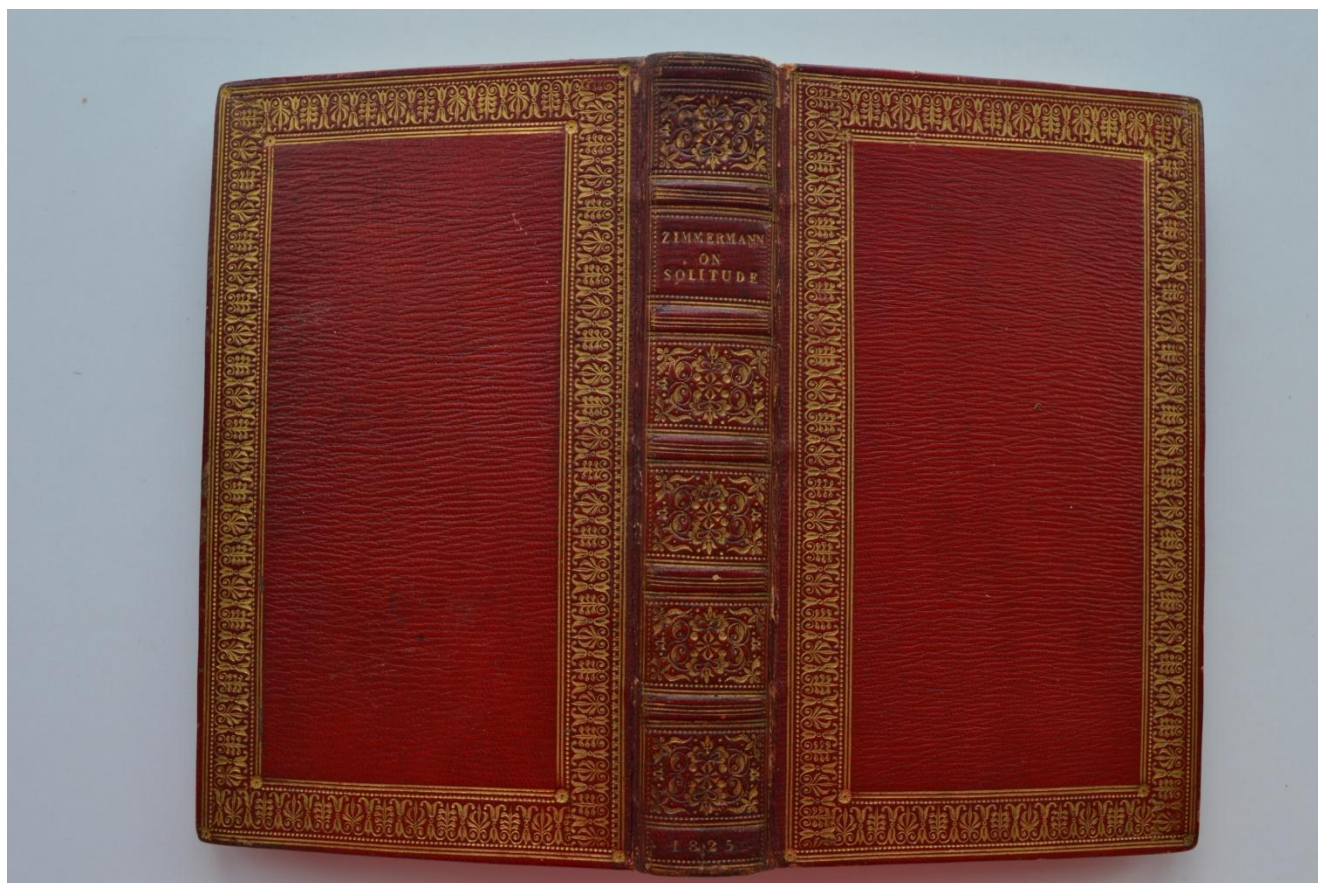


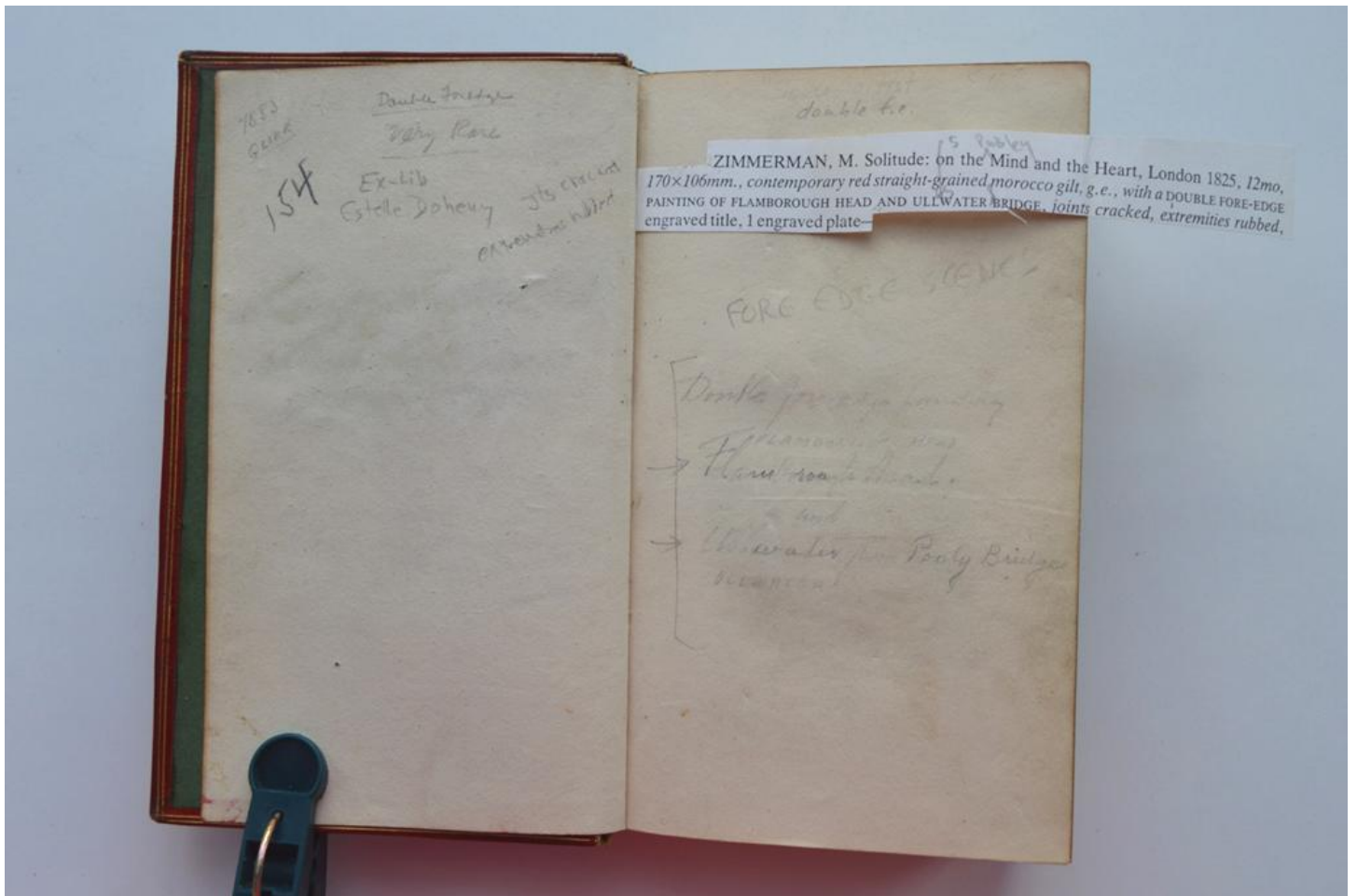
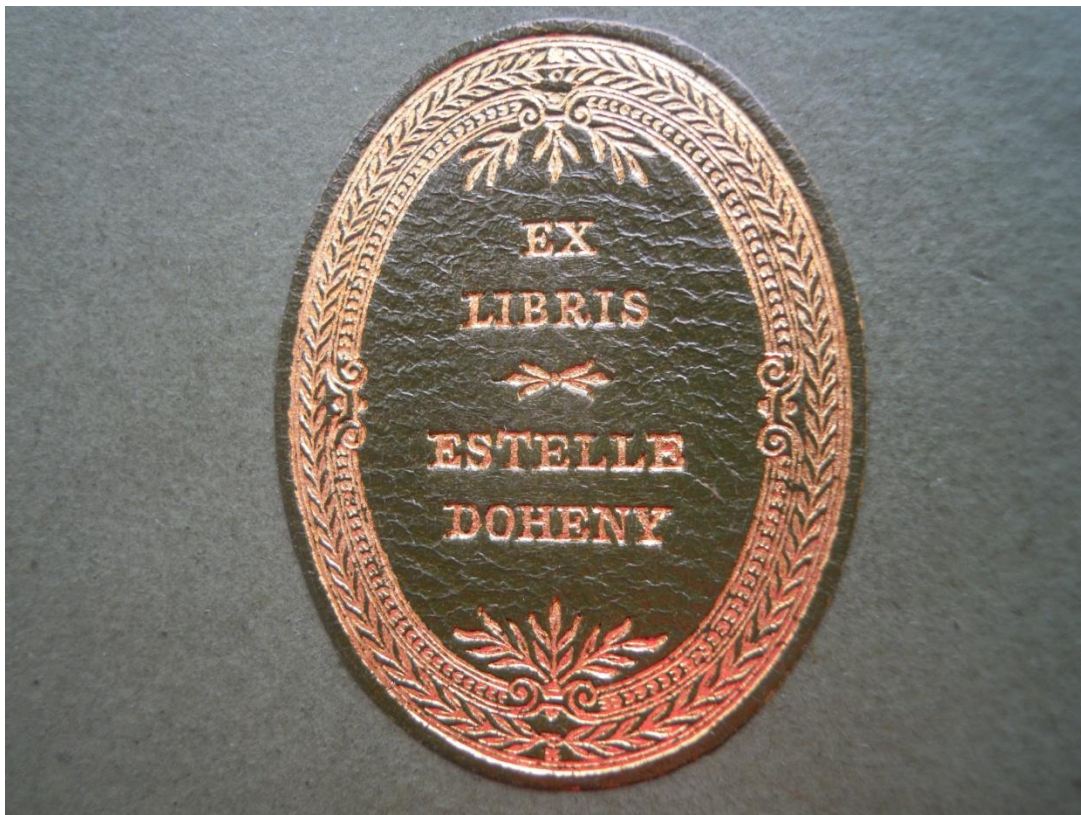
Solitude Considered

Double Fore-Edge



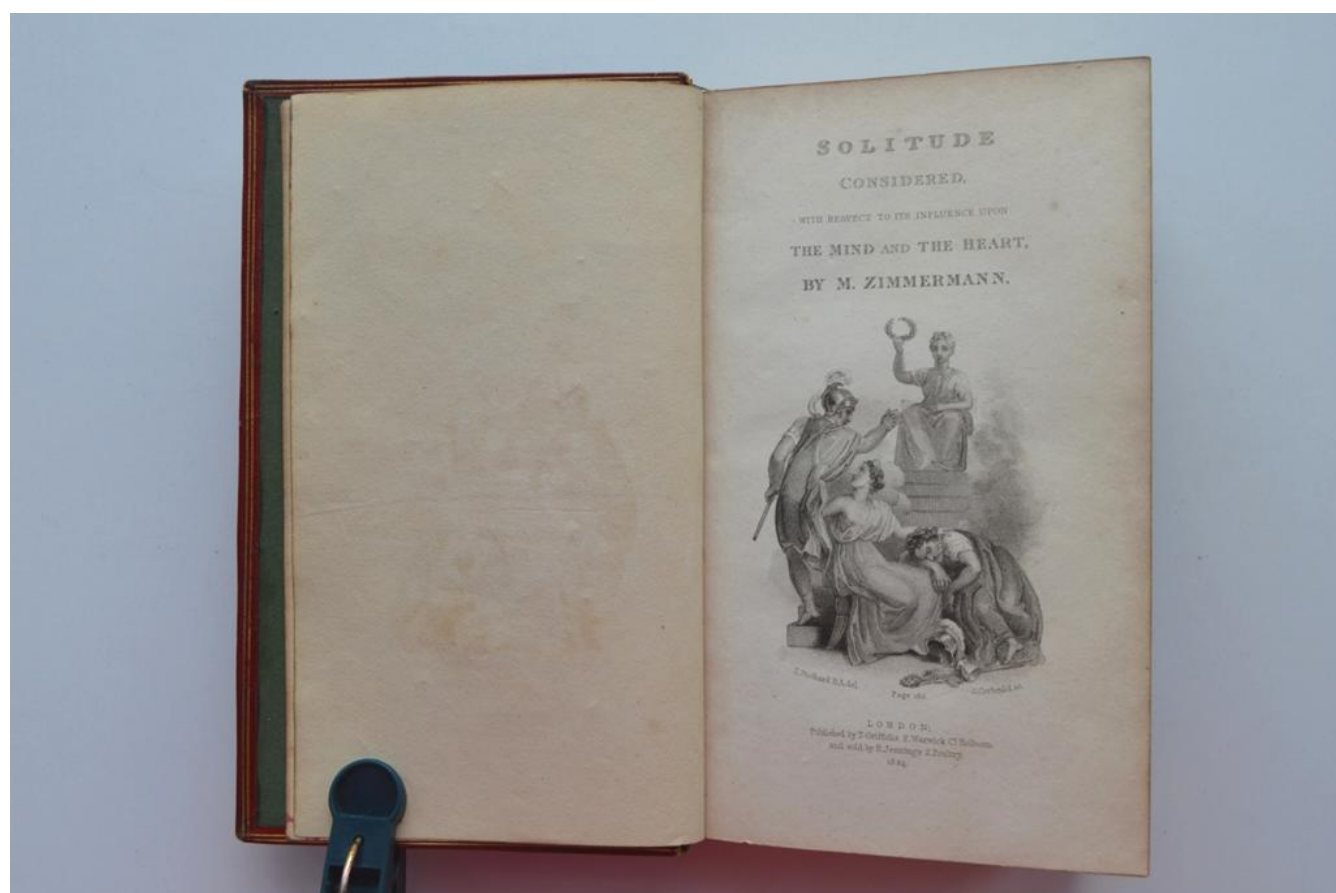


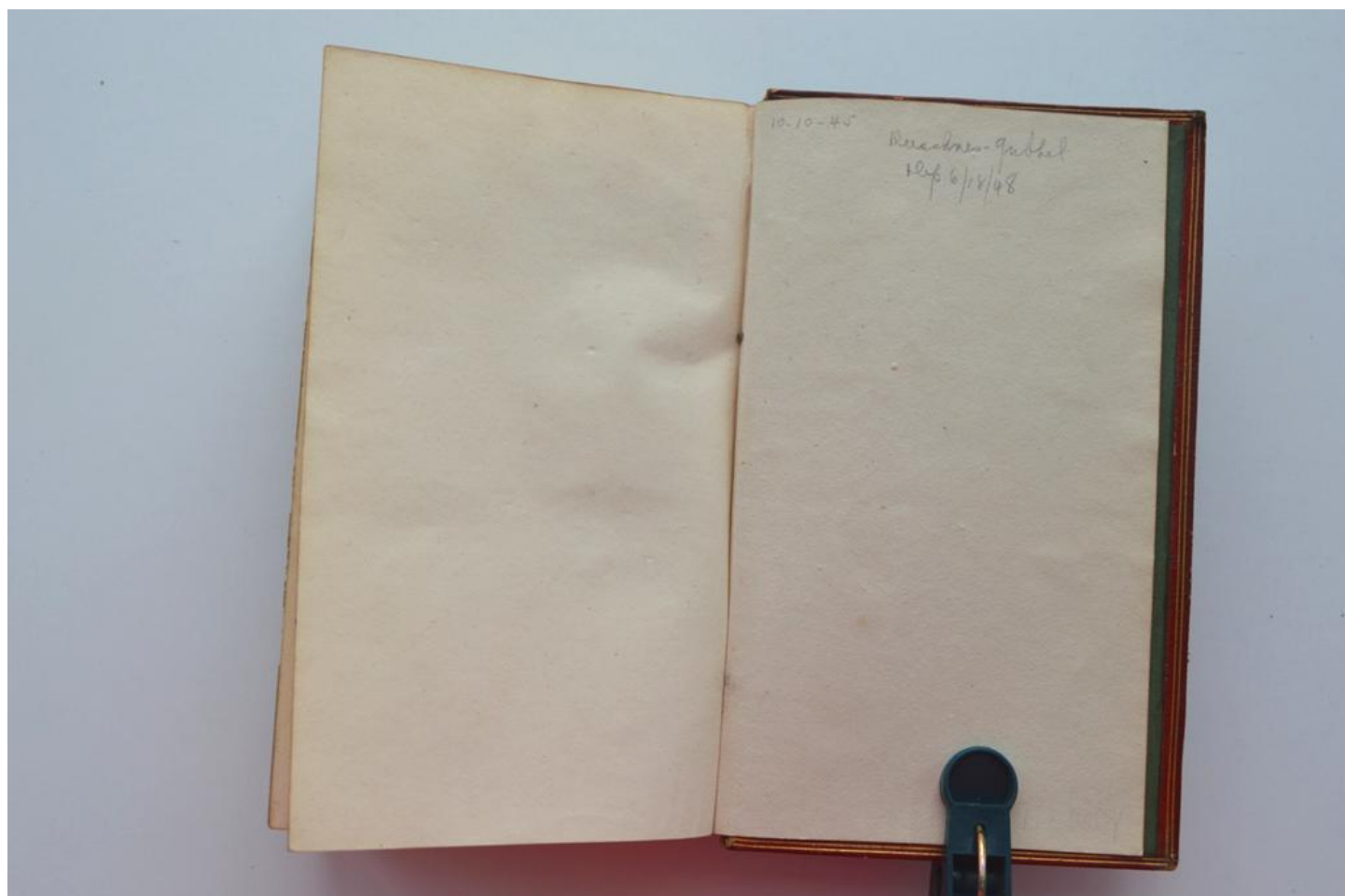
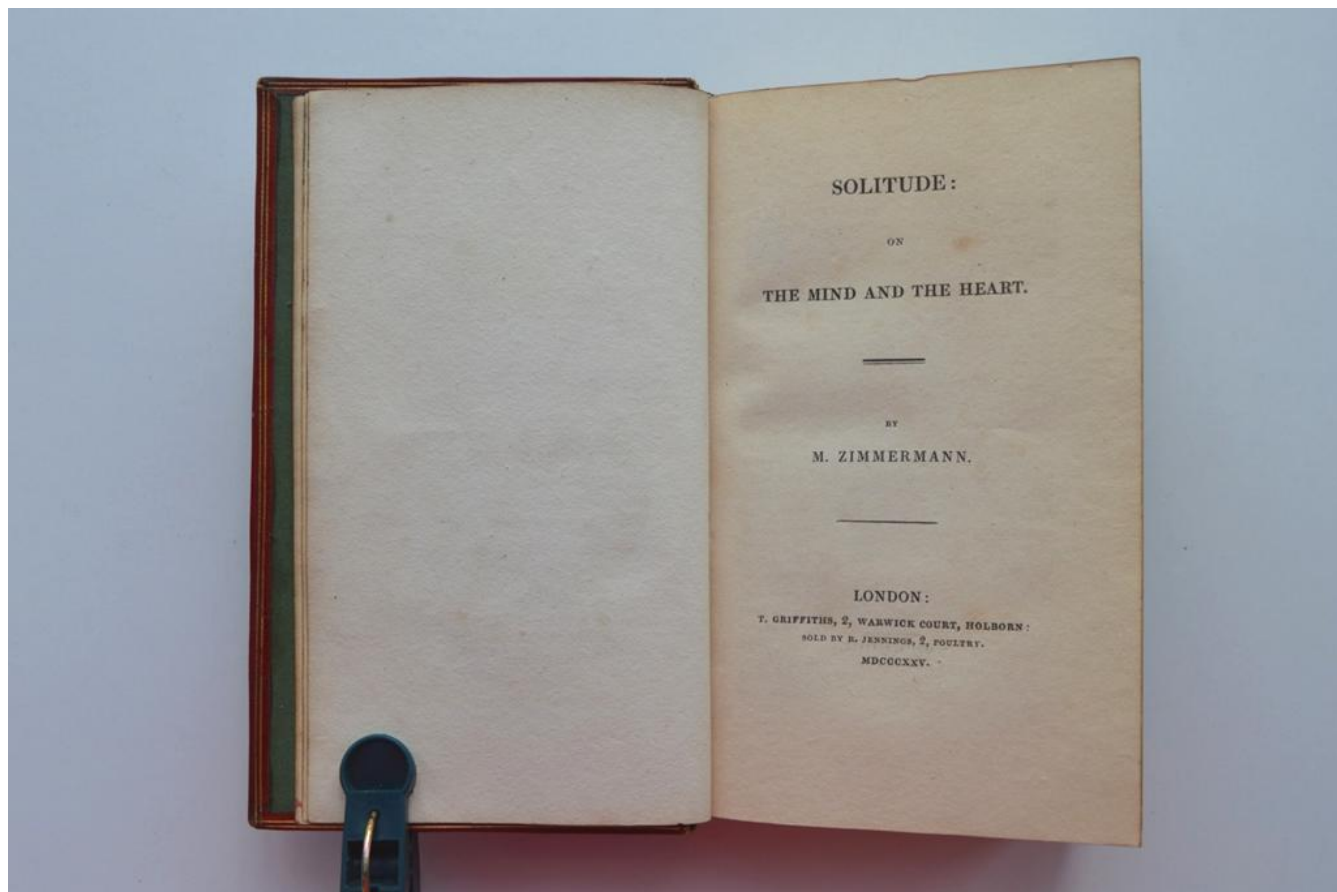


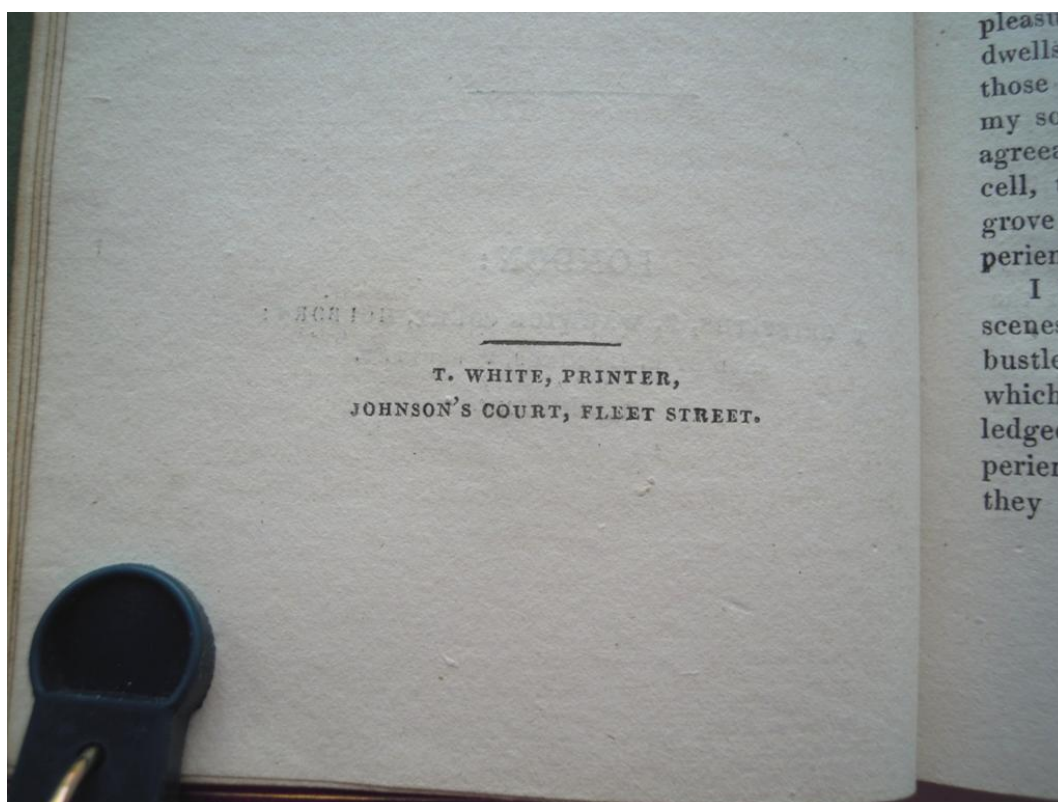


FORE EDGE SCENE -

Double fore-edge binding
 → FLAMBOURNE HEAD
 → Flamboyant Head
 and
 → Ullswater from Pooley Bridge
 ULLSWATER







JEFF WEBER RARE BOOKS

1815 Oak Ave, Carlsbad CA 92008

Phone: 323 333 4140
weberbks@pacbell.net

MEMBER: ABAA ILAB



Estelle Doheny's Copy

ZIMMERMANN, Johann Georg Ritter von (1728-1795). *Solitude: on the Mind and the Heart*. London: T. Griffiths, 1825, 1824.

12mo. [iv], 344 pp. Engraved half-title, 2 engraved plates. Original full crimson straight-grain morocco, gilt extra, all edges gilt. Bookplate of Estelle Doheny. Very good.

Rare and relatively early double fore-edge painting, highly prized due to being from the Doheny collection. The paintings are labeled, "Flamborough Head," [lighthouse] and, "Ullswater from Pooley Bridge" [incorrectly labeled in the Christie's catalogue]. The original engraving from which this illustration was copied, dates from 1834 and was entitled, "Ullswater from Pooley Bridge"

From the Col. John B. Gribbel sale/auction [1948]. Purchased by Philip C. Duschnes (1897-1970) who sold the volume to Estelle Doheny, recorded June 18, 1948. This book was paired with another Zimmermann and sold at the Doheny-Christie's Sale, vol. V, Feb. 21-22, 1989, sold to Strand for \$2,420 [lot included 3 titles in 5 volumes].

☆ See: *Catalogue of the Books & Mss. in the Estelle Doheny Collection*, Part III, Los Angeles, 1955.

Title of Book: Solitude Considered. With Respect to Its Influence Upon The Mind and The Heart.

Author: M. Zimmermann

Publisher: London: T. Griffiths, 2 Warwick Court, Holborn: Sold by R. Jennings, 2 Poultry.

Publication Date: 1825

Dimensions: 6 3/4" long X 4 1/8" wide X 1" high

Condition: Very good.

Provenance:

- a) Col. John B. Gribbel sale/auction 1948
- b) Philip C. Duschnes (1897-1970)
- c) Estelle Doheny, recorded June 18, 1948
- d) Jeff Weber Rare Books

Description: Rare and relatively early double fore-edge painting, highly prized due to being from the Doheny collection.

12mo [iv], 344 pp. Engraved half-title, 2 engraved plates. Original full crimson straight-grain morocco, gilt extreme, all edges gilt. Bookplate of Estelle Doheny, Very good.

Fore-edge Painting: Flamborough Head (lighthouse) and Ullswater from Pooley Bridge