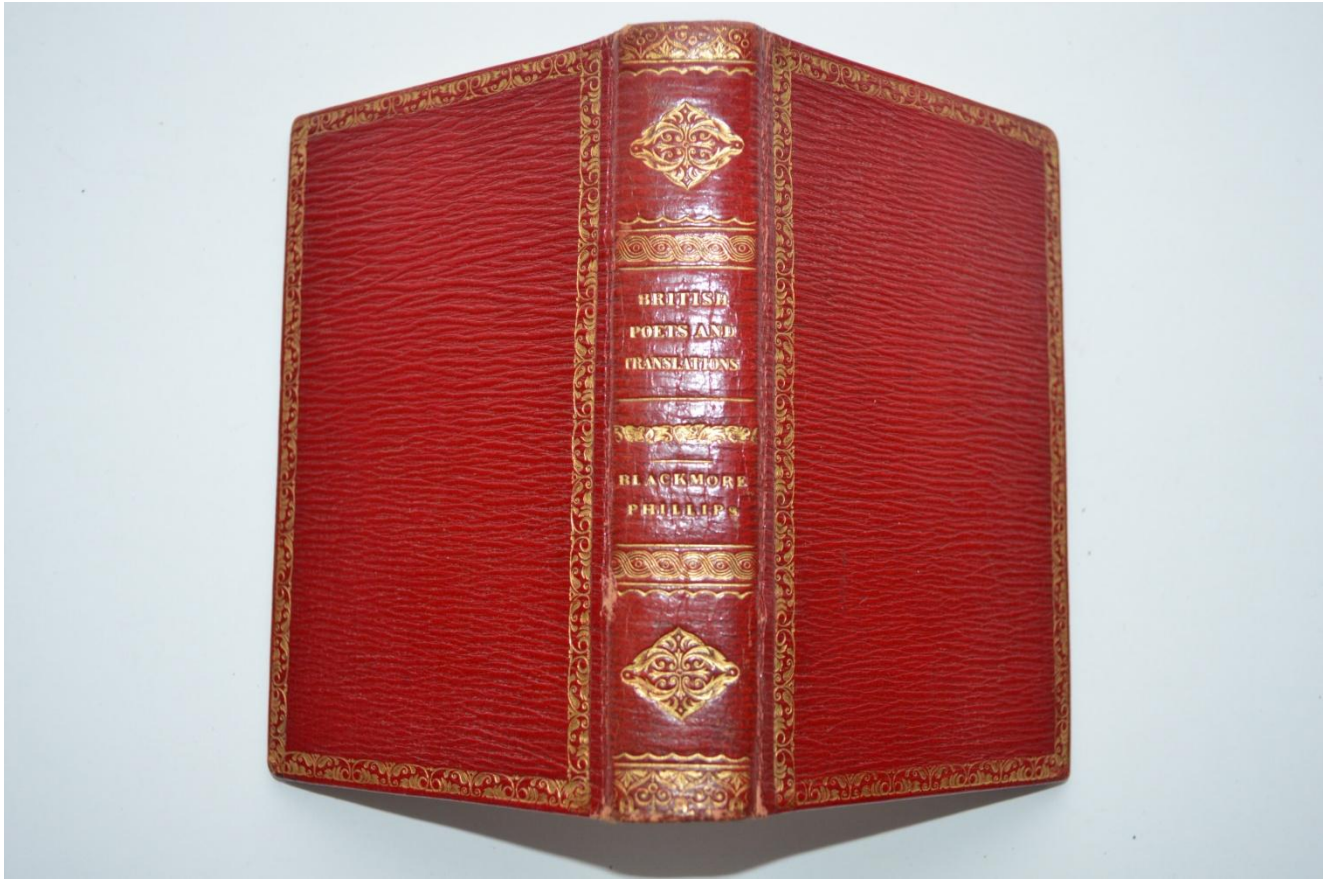
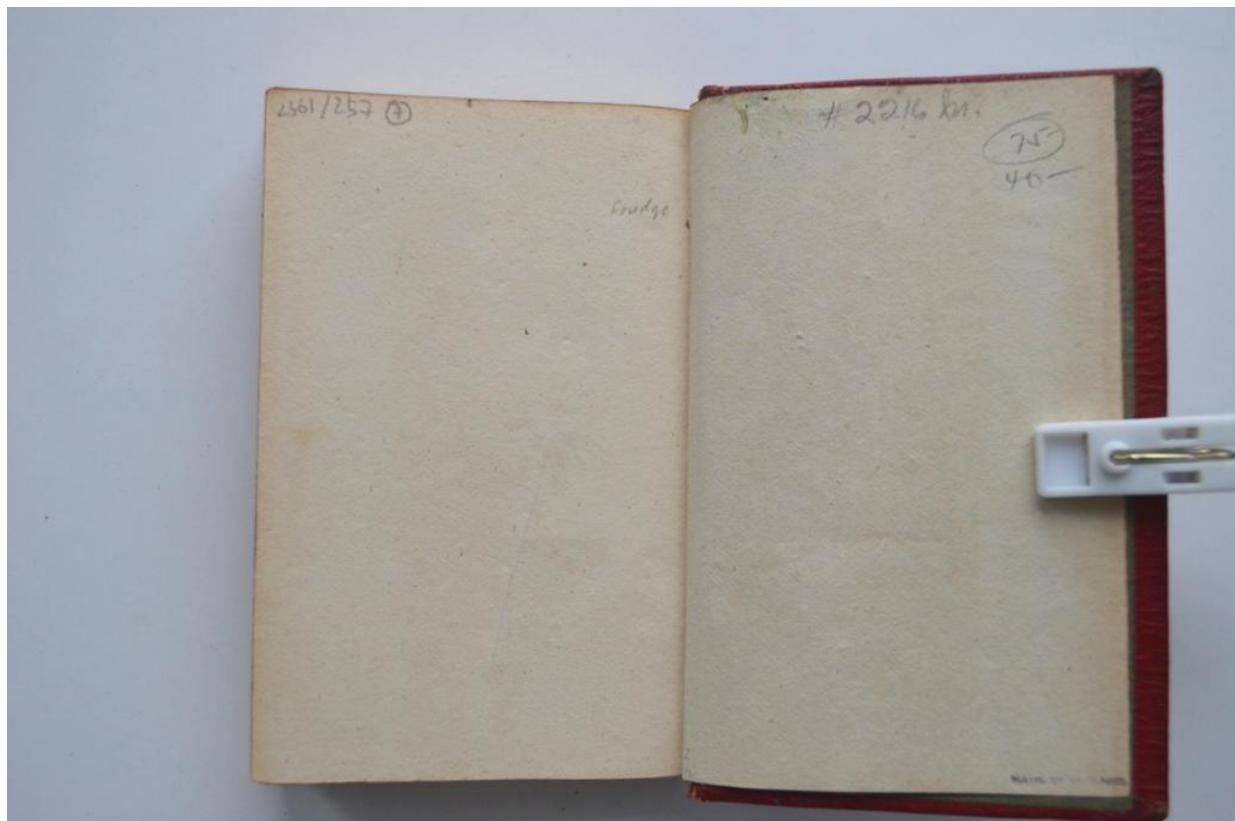
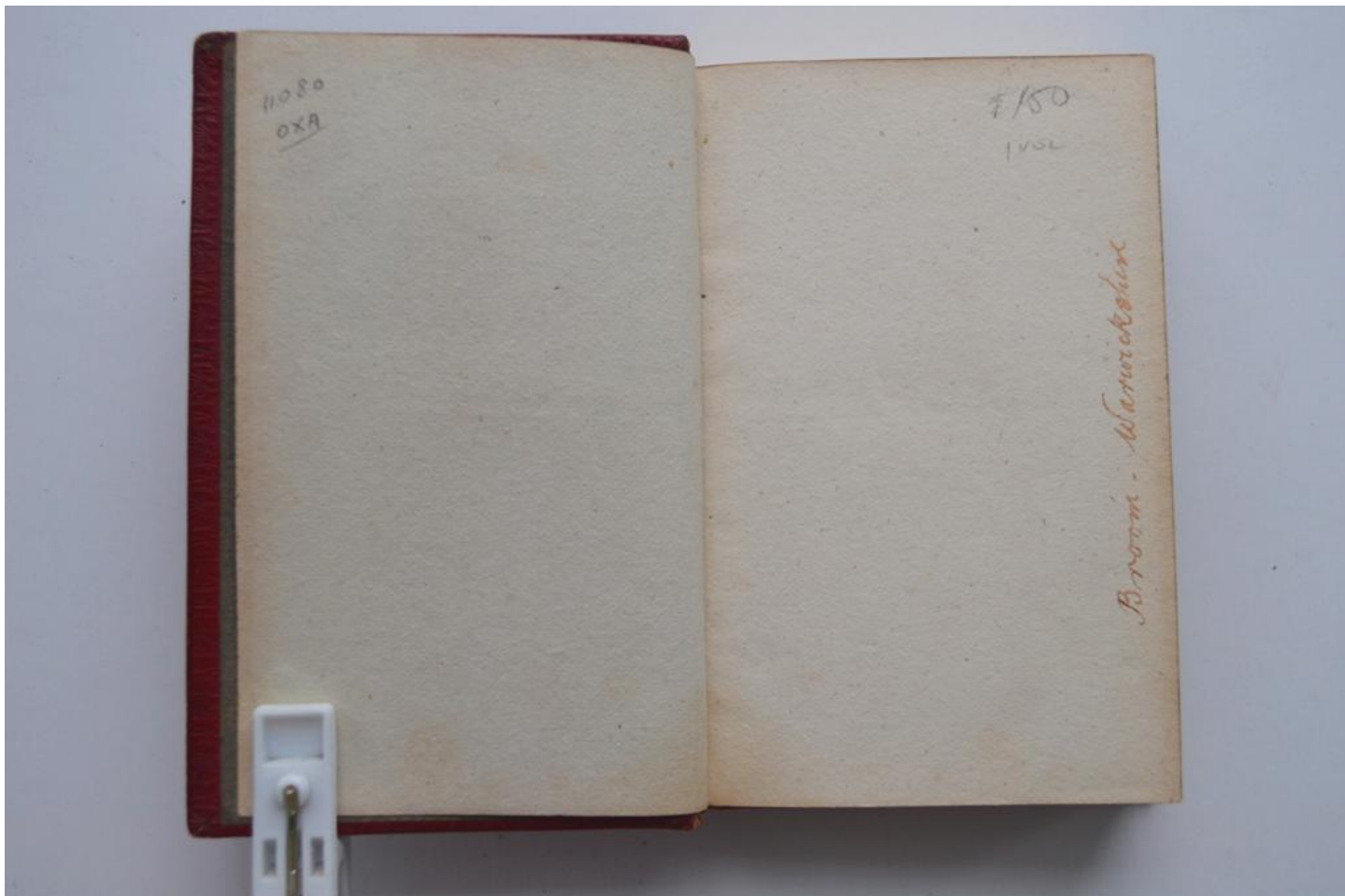


British Poets and Translations: Blackmore & Phillips.









BLACKMORE  
Swift through the spacious gulph the wrold her way  
At length arriv'd in empyrean day.  
*Book 2d. Page 721.*

THE  
**CREATION;**

A  
*POEM.*

BY  
SIR RICHARD BLACKMORE,

LONDON:  
PUBLISHED BY SUTTARY, EVANCE, AND FOX,  
STATIONERS' COURT; SOLD BY J. SHARPE,  
PICCADILLY; AND ALL OTHER BOOKSELLERS.  
MDCCXCIX.

Engraved by R. Smith. Designed by J. Goussier.

Published at the Stanhope Press.



PHILLIPS.  
Simple of heart, yet for ambitious want  
To ill-got wealth.  
*Char. Phillis.*

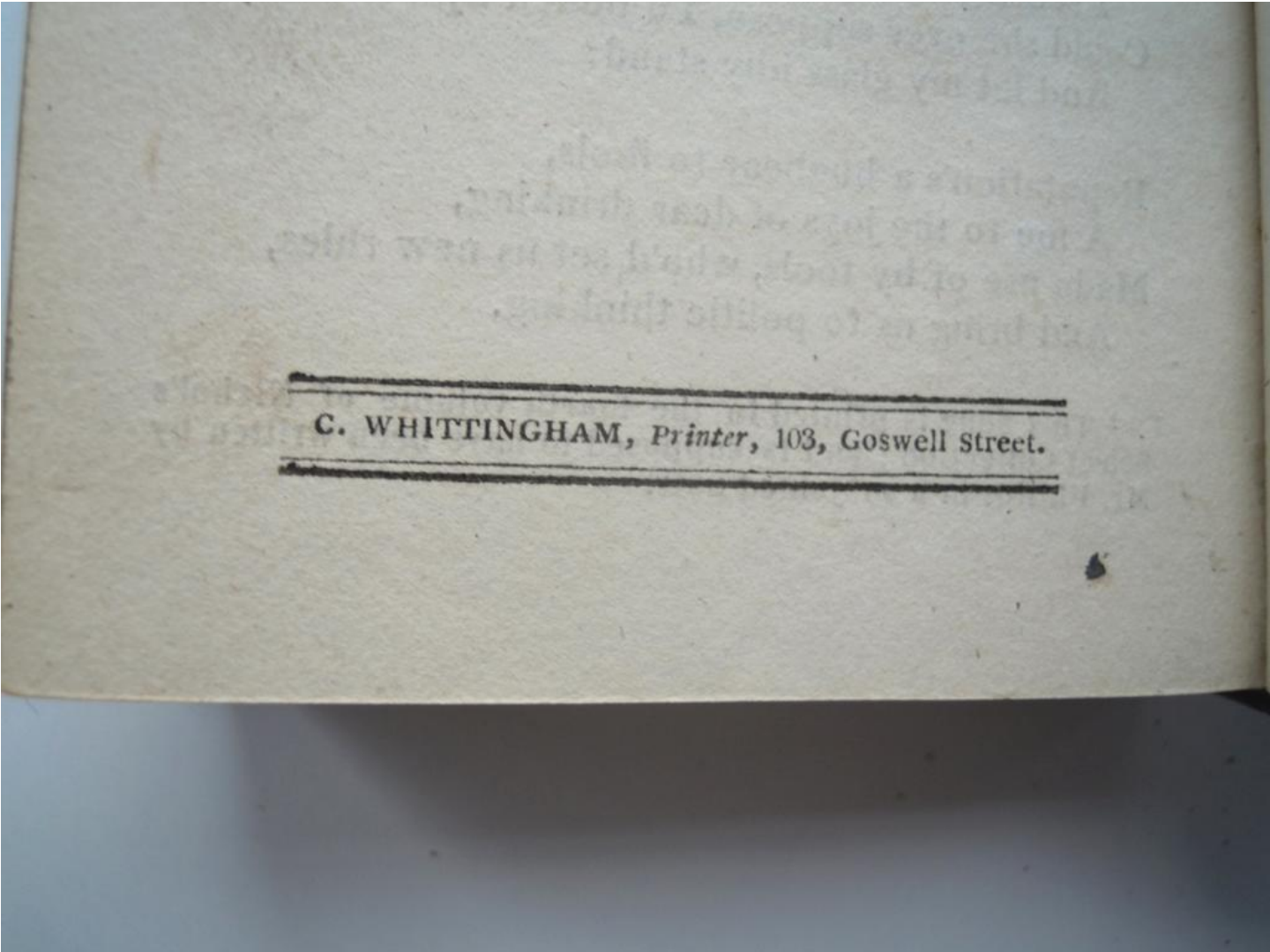
THE  
**POETICAL WORKS**  
OF  
*JOHN PHILLIPS.*

COLLATED WITH THE BEST EDITIONS:  
BY  
THOMAS PARK, ESQ. F. S. A.

LONDON:  
Printed at the Stanhope Press,  
BY CHARLES WHITTINGHAM,  
103, Goswell Street;  
FOR J. SHARPE; AND SOLD BY W. SUTTARY,  
STATIONERS' COURT, LUDGATE STREET.

1807.

Engraved by R. Smith. Designed by J. Goussier.  
Published at the Stanhope Press.



C. WHITTINGHAM, *Printer*, 103, Goswell Street.

**Title of Book:** British Poets and Translations: Blackmore & Phillips.  
The Creation; A Poem Blackmore & The Poetical Works of John Phillips.

**Author:** Sir Richard Blackmore & John Phillips.

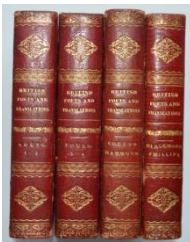
**Publisher:** London: Published by Suttaby, Evance, and Fox, Stationers' Court; Sold by J. Sharps, Piccadilly; and All Other Booksellers.

**Publication Date:** 1819 & 1807

**Dimensions:** 5" long X 3 1/4" wide X 7/8" high

***Purchased as a 4 book set With:***

- a) British Poets and Translations: Young 1 - 2: The Poetical Works of Edward Young, D.D. in Four Volumes. Vol. I & II
- b) British Poets and Translations: Young 1 - 2: The Poetical Works of Edward Young, D.D. in Four Volumes. Vol. III & IV
- c) British Poets and Translations: Cotton & Hammond.  
The Poetical Works of Nathaniel Cotton & The Poetical Works of James Hammond
- d) British Poets and Translations: Blackmore & Phillips.  
The Creation; A Poem Blackmore & The Poetical Works of John Phillips



***Provenance:***

- a) Dorothy Jayne Pedrini Shea
- b) Sworders

***Fore-edge Painting:*** Broom, Warwickshire